



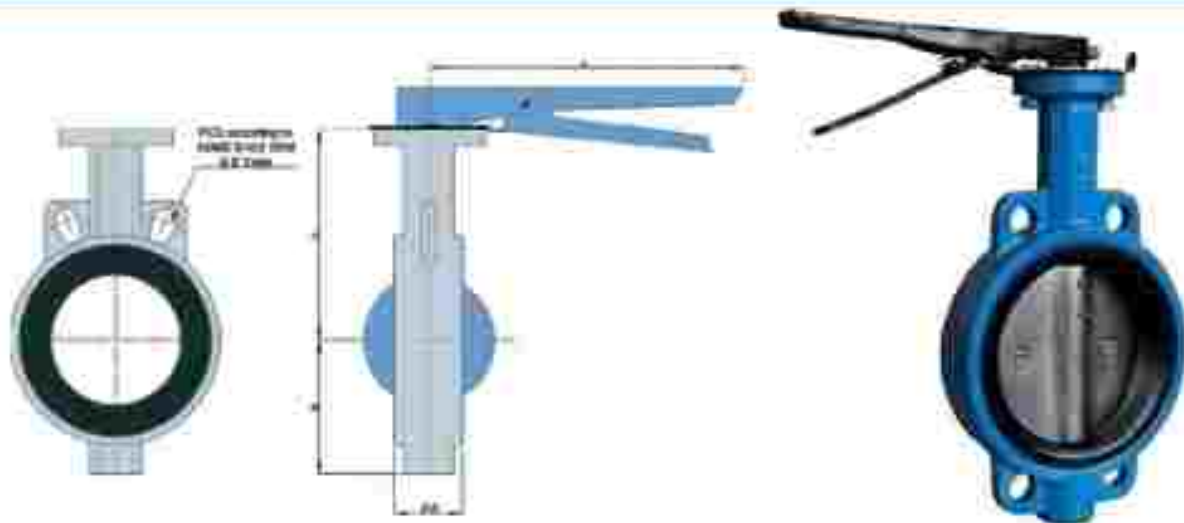
RAJEEV & Company

(An ISO 9001:2015 Company)

Manufacturers of KAVAATA VALVES



WAFER TYPE BUTTERFLY VALVE (Industrial Pattern)



SIZE		F-F	A	B	L	MOUNTING FLANGE PCD
MM	INCH					
40	1 1/2"	23	87	57	215	F05
50	2"	43	112.5	50.5	215	F05
60	2 1/2"	48	111	72	215	F09
80	3"	48	124	74	215	F09
100	4"	62	153	90.75	263	F07
125	5"	68	168.5	108.3	263	F07
150	6"	55	189.5	121.9	263	F07
200	8"	60	233	159	300	F07
250	10"	68	277	200	GEAR OPERATED	F10
300	12"	78	305	231		F10
380	14"	92	320	272		F12
400	16"	102	385	302		F14
450	18"	116	405	326		F14
500	20"	127	485	406		F18
600	24"	154	540	480		F18

(All dimensions are in mm)

NOTE:

- > Dimensions 'A', 'B' and 'L' given are approximate values.
- > Due to continuous improvements, dimensions are subject to change. Please confirm the dimensions while placing orders.

Material:

Body: CI, WCB, CF8, CF8M

Disc: CI, SG IRON, CF8, CF8M

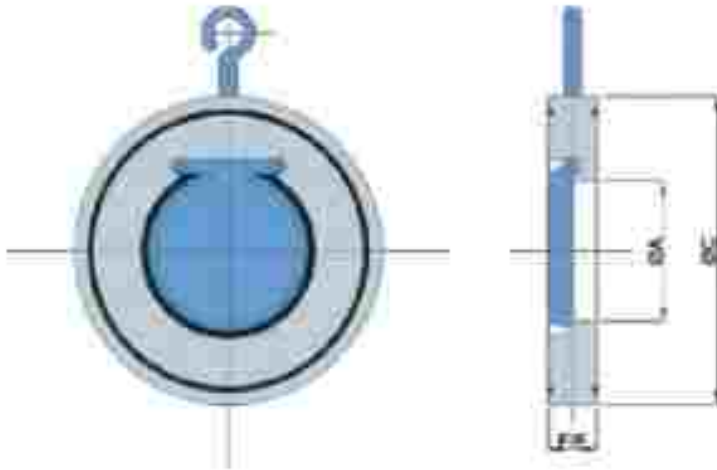
Seat: Nitrile / EPDM / Viton / Silicon / Hypalon

Handle: Sheet metal

Salient features:

1. Design standard: As per IS 13095, BS 5155, API 609
2. Testing standard: As per API 598, ISO 5208
3. Available in Gear, Pneumatic & Electric actuation.
4. Actuator Ready Series for on-site actuation.
5. Low Torque
6. Aesthetic looks.

WAFER TYPE SWING CHECK VALVE



SIZE		A	F/F	C				
MM	INCH			PN10	PN16	BS10CI	BS10E	ANSI10
25	1	14	19	72	72	88	88	84
40	1½	22	19	93	93	88	88	88
50	2	30	19	108	108	97	97	104
65	2½	40	19	128	128	110	110	123
80	3	52	19	143	143	129	129	136
100	4	71	19	163	163	161	161	174
125	5	95	19	193	193	193	193	196
150	6	114	19	219	219	218	218	221
200	8	157	28.5	274	274	274	272	278
250	10	195	28.5	329	329	335	335	339
300	12	230	38	379	385	385	383	409
350	14	270	44.5	438	444	445	446	449
400	16	310	51	489	496	496	496	512
450	18	360	60.5	538	555	559	559	545
500	20	406	63.5	593	606	616	616	605
600	24	490	70	695	709	727	724	714

(All dimensions are in mm)

NOTE: Due to continuous improvements, dimensions are subject to change. Please confirm the dimensions while placing orders.

Material:

Body: CI, WCB, CF8, CF8M

Disc: MS, CF8, CF8M

Seat: Nitrile / EPDM / Viton / Silicon / PTFE

Handle: Sheet metal

Salient features:

1. Design as per API 594
2. Inspection & testing as per API 598
3. Powder coated
4. Mounting requires minimum space
5. Easy to install

BRASS FORGED BALL VALVE

KAVAATA® brass ball valves are compact, heavy duty, simple & cost effective. KAVAATA® brass ball valves are full flow, quarter turn, handle operated, general purpose ball valves to stop the flow of liquid or gas in any piping systems. These valves are manufactured from forgings of graded brass extruded rods and machined on highly accurate CNC machines to achieve international standard quality.

KAVAATA® brass ball valves are manufactured by KAVAATA® VALVES. These valves are designed and developed according to international standard EN- 13547- 2013. The valve design is suitable for 25 Bar pressure.

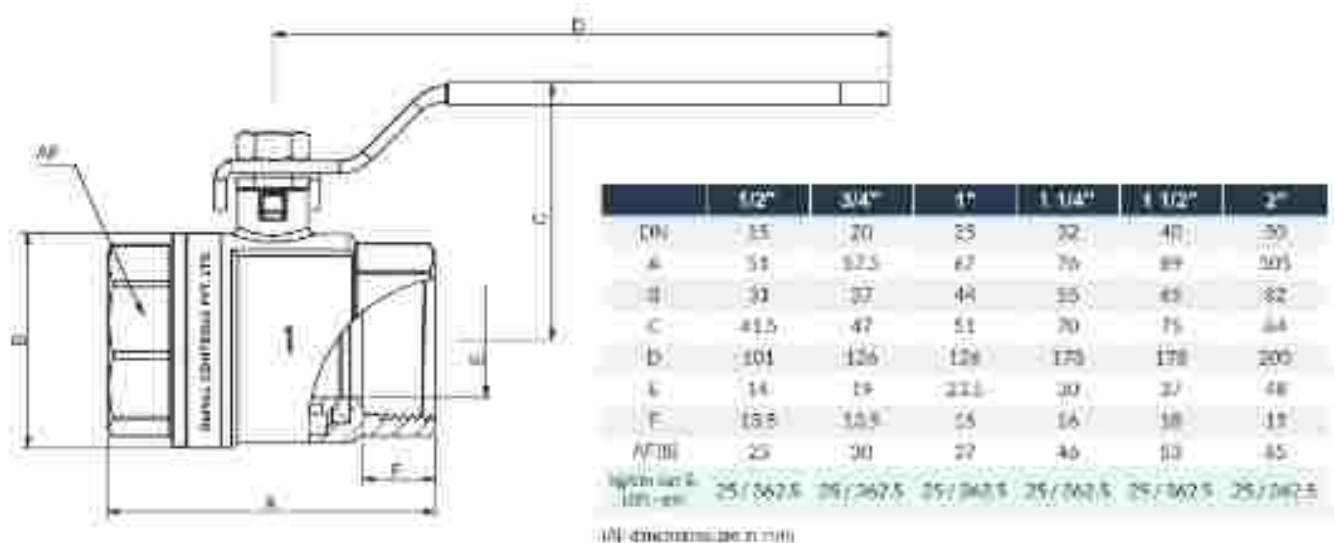
100% valves are tested at 6 Bar air pressure according to standard EN 12266- 1.

KAVAATA® VALVES ARE SAFE FOR DRINKING WATER APPLICATIONS.

INSTALLATION

KAVAATA® brass ball valves can be installed bi-directionally.

SIZE SPECIFICATIONS



NOTE: Due to continuous improvements, dimensions are subject to change. Please confirm the dimensions while placing orders.

BRASS FORGED BALL VALVE

SPECIFICATIONS

- Material- Full brass forged body. (Nickel plated)
- Seat ring- Virgin PTFE (Teflon)
- Lever- Dacromet coated steel handle. (Rust proof)
- Spindle- Blow out proof
- Ball- Super finish chrome plated
- End threads- BSP to ISO 228 at both ends
- Working Temp : -20 to 180 °C
- Pressure range: 25 Bar (at 60 °C)
- Material grade, size & pressure range permanently roll marked on the surface
- Dust and thread protection cap



BENEFITS

- KAVAATA valves are highly corrosion (rust) resistant with hard water contact.
- KAVAATA valves are designed such that there is no leakage even at low pressure.
- KAVAATA valves are manufactured from low lead content brass (CW 617N) and are safe for drinking water and health.
- KAVAATA valves are easy to fit and replace with standard pipe thread.

MATERIAL SPECIFICATION



No.	Qty.	Description	Material	Standard
1	1	Lock Nut	Brass_CW617N (Nickel Plated)	EN 12165
2	1	Handle	Steel-Dacromet [®] Coated	EN 10111
3	1	Clamp Nut	Brass_CW617N (Nickel Plated)	EN 12165
4	1	Spindle	Brass_CW617N	EN 12165
5	1	Seal Ring	PTFE	-
6	1	Body	Brass_CW617N (Nickel Plated)	EN 12165
7	2	Seat Ring	PTFE	-
8	1	Ball	Brass_CW617N (Polished Nickel Plated)	EN 12165
9	1	Hub	Brass_CW617N (Nickel Plated)	EN 12165

BRASS SPRING CHECK VALVE

KAVAATA valves are compact, heavy duty, simple and cost effective.

KAVAATA spring check valves work automatically to keep water flowing in one direction and prevent any reverse flow in a water piping system. The force of flow, in the correct direction, opens the valve whilst back flow forces the valve to close.

KAVAATA brass spring check valves are manufactured by KAVAATA VALVES. These valves are designed and developed according to international standards BS 5154. The valve design is capable of achieving minimum loss of pressure.

KAVAATA VALVES ARE SAFE FOR DRINKING WATER APPLICATIONS.

INSTALLATION

KAVAATA check valves can be installed in any position- Vertical / Horizontal.

APPLICATIONS

- Pump discharge
- Boilers
- HVAC systems
- Building utilities
- Pressure pumps
- Sump pumps
- Solar hot water systems and many more...



BRASS SPRING CHECK VALVE

SPECIFICATIONS

- Material- Full brass forged body.
- Seal- NBR
- Support to seal- Stainless steel plate
- Spring- Stainless steel
- End threads- BSP to ISO 228 at both ends.
- Working Temp.: -20 to 100 °C.
- Flow indicator, size & pressure range permanently marked on the surface.



ADAVANTAGES

- No direct metal to metal sealing.
- Silent
- Capable of handling extra weight of piping installations.
- Quick closing

BENEFITS

- Prevents water back flow. (Zero leakages)
- Prevents water hammer.
- Prevents loss of prime in the pump systems.
- Prevents loss of water pressure in the building.

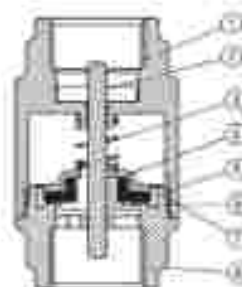
SIZE SPECIFICATION



PART NO.	SIZE	DN	A	B	PN
KAV 100	1/2"	15	38.5	34.5	25
KAV 125	3/4"	20	50	47.5	25
KAV 150	1"	25	74.5	70	25
KAV 200	1 1/2"	35	93	89.5	16
KAV 250	2"	50	93	71	16
KAV 300	2 1/2"	65	101	87	16

ISO Dimensions in mm (in)

MATERIAL SPECIFICATION



POS.	DESCRIPTION	MATERIAL
1	Body	CUZ15
2	Flt	CUZ15N
3	Spring	SS 304
4	Plate	SS 304
5	Water	H ₂ O
6	Plug	CUZ15N
7	Adhesive	TYRINO 65N
8	Nut	CUZ15N

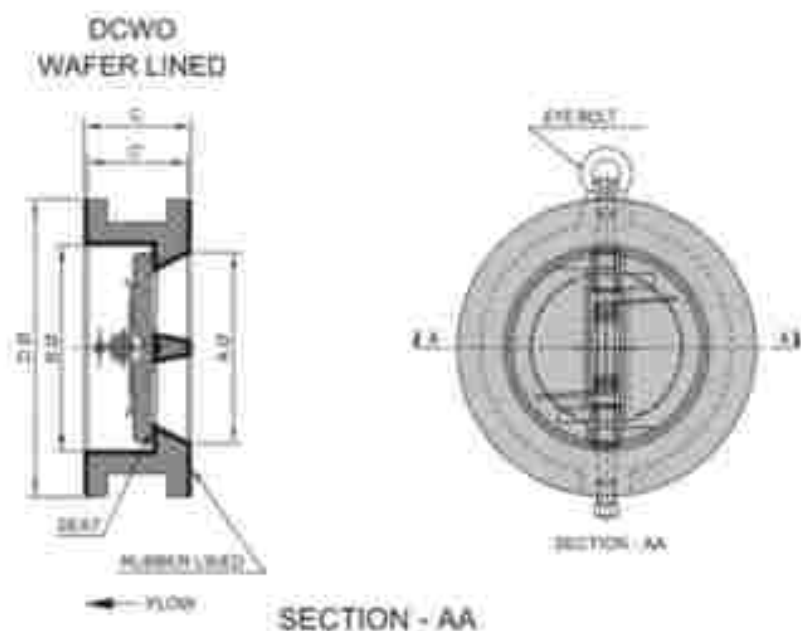
NOTE: Due to continuous improvements, dimensions are subject to change. Please confirm the dimensions while placing orders.

DUAL PLATE CHECK VALVE

Feature : Rubber lined

Size : 2" – 24"

Rating : ANSI#125



INSTALLATION DIMENSIONS

Size : 2" - 24"	Rating : ANSI # 125			Flange ANSI B 16.5		End Facing	Approx weight in Kg Wider
SIZE Inches (DN)	AD	BD	C	C'	DD		
2" (50)	52	60	60	54	106	50	3
2.5" (65)	65	75	66	60	124	56	5
3" (80)	76	90	73	67	134	56	7
4" (100)	100	114	75	67	172	56	9
5" (125)	125	135	88	63	196	56	14
6" (150)	150	168	101	66	222	56	18
8" (200)	200	215	133	127	279	56	26
10" (250)	250	265	148	140	340	56	48
12" (300)	300	315	167	161	409	56	78
14" (350)	350	365	190	184	460	56	90
16" (400)	400	418	197	191	514	56	100
18" (450)	450	470	209	203	548	56	140
20" (500)	500	520	219	213	623	56	180
24" (600)	600	620	238	232	718	56	210

(All dimensions are in mm)

NOTE: Due to continuous improvements, dimensions are subject to change. Please confirm the dimensions while placing orders.



RAJEEV
& Company

(An ISO 9001:2015 Company)

Manufacturers of KAVAATA VALVES



Head Office : 423, Nazar Camp Cross 3, Main Road,
Vadgaon, Belgaum-590005, Karnataka.

Factory Address : 103/3, Dewarwadi Village, Chandgad Taluk,
Kolhapur Dist, Maharashtra - 416507, India

Phone : 0831-2482327/2484635 | Mob.: 9243210643 / 9243222573 | Fax : 0831-2481752

E-mail : sales@kavaatavalves.com | ashokraonb@yahoo.com

www.kavaatavalves.com